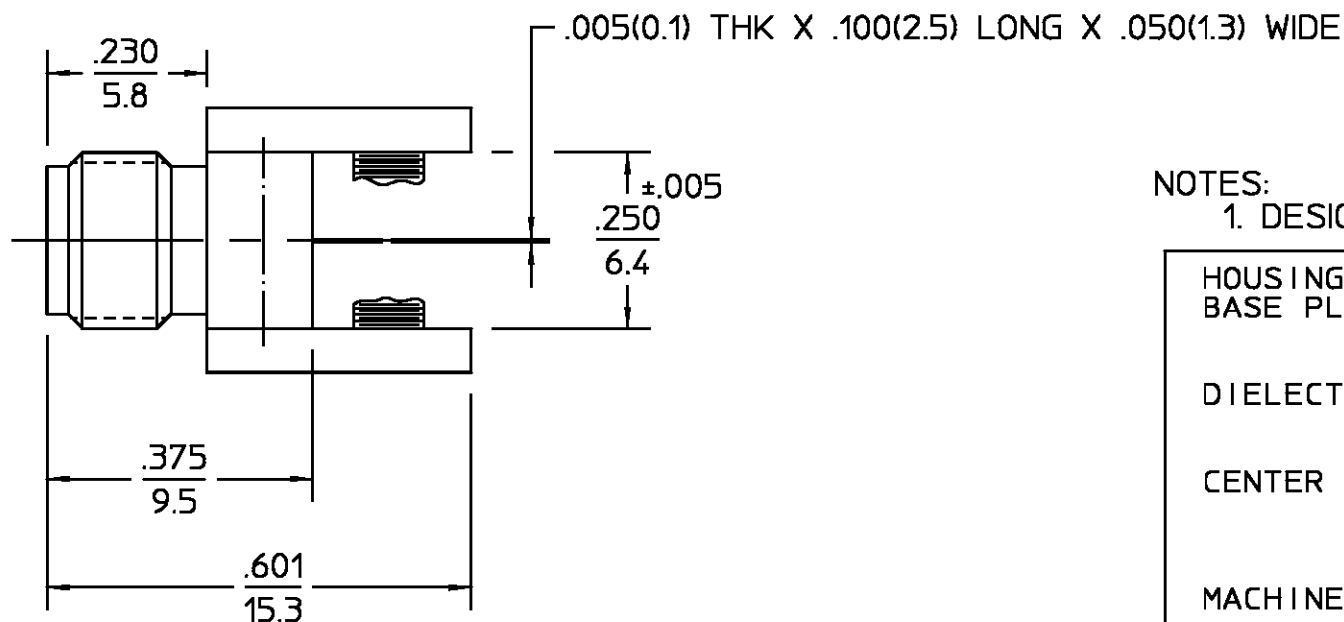
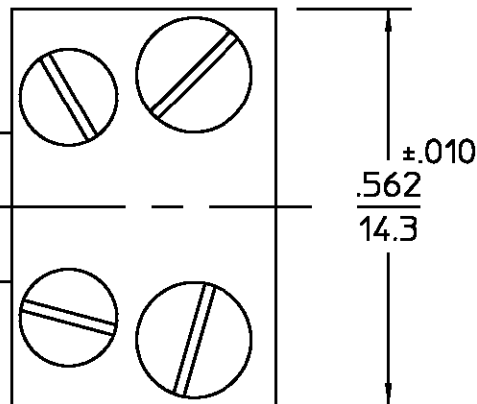
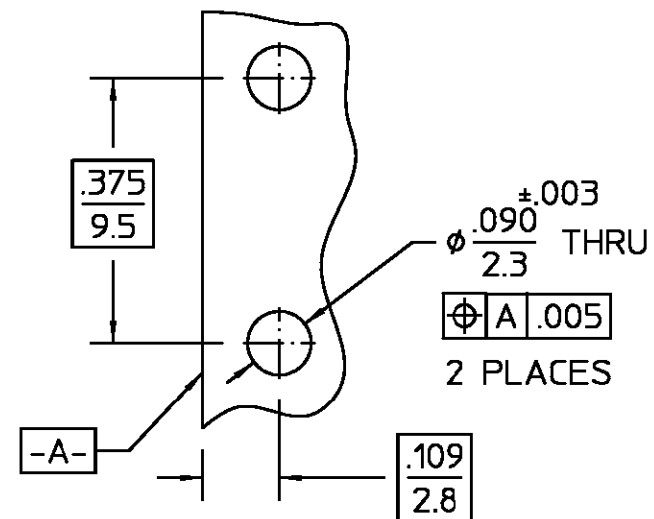


.250-36 UNS-2A

OSM JACK



REVISIONS			
REV	DESCRIPTION	DATE	APPROVED
03 <sub>2</sub>	REVISED	8/14/75	[Signature]



MOUNTING HOLE PATTERN

NOTES:

1. DESIGNED FOR USE WITH 1/4" THICK STRIPLINE

.XXX = in  
XX.X = mm (REF)

HOUSING BASE PLATES	STAINLESS STEEL PER ASTM-A484 AND ASTM- A582, TYPE 303	PASSIVATE PER QQ-P-35
DIELECTRIC	TFE FLUOROCARBON PER ASTM-D-1457	N/A
CENTER CONTACT	BERYLLIUM COPPER PER ASTM-B-196 OR ASTM-B-197, ALLOY C17300, CONDITION H	GOLD PLATE PER MIL-G-45204
MACHINE SCREWS	CORROSION RESISTANT STEEL PER QQ-S-763	PASSIVATE PER QQ-P-35
COMPONENT	MATERIAL	FINISH

UNLESS OTHERWISE SPECIFIED  
DIMENSIONS ARE IN MILLIMETERS  
TOLERANCE ON  
FRAC. DEC. ANGLES  
± 1/64 ±.25 ± 1°

DRAWN BY RFF DATE 8/14/75  
CHECKED BY BWC 8/14/75  
APPD BY BWC 8/14/75

**AMP**  
AMP Incorporated  
140 Fourth Avenue  
Waltham, MA 02451-7599

These drawings and specifications are the property of M/A-COM Incorporated and shall not be reproduced or copied or used in whole or in part as the basis for the manufacture or sale of item(s) without written permission.

USE ASS'Y PROCEDURE  
NO. AP. N/A

TITLE OSM STRAIGHT END LAUNCH JACK  
SIZE B CODE IDENT NO. 26805 2070-5069-02 REV 03<sub>2</sub>  
SCALE 4 : 1 SHEET 1 OF 1